

# Dash Mega Banner Stand

UB182



A highly portable, versatile and cost effective telescopic tripod banner stand that is lightweight, very stable and simple to use. The telescopic support pole enables the user to vary the height of the graphic up to a maximum of 2.4 metres

## features & benefits

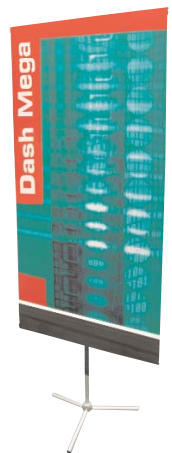
- Lightweight anodised silver components
- Wide base tripod foot
- 3 part telescopic pole for adjustable graphic height
- Option to add literature holder
- Quick to assemble and easy to use
- Includes Carry bag/tube



graphic dimensions



Twin Dash Mega  
(requires extra set of rails)



Literature holder accessory  
when attached to banner

hardware specifications	graphic specifications	additional info
<p>Hardware Dimensions (mm) 2610 (h) (max) x 800 (w) approx. Footprint 710 x 630 approx.</p> <p>Weight: 3kg approx (including carry bag/tube)</p>	<p>Maximum Graphic Dimensions (mm): 2400 (h) (max) x 800 (w) approx (Height is adjustable)</p> <p>Note: 15mm of graphic height is 'lost' inside each rail.</p> <p>NB Typical graphic size: 2000 (h) x 800 (w)</p> <p>Substrate: Between 225 &amp; 300 microns</p>	<p>Included in kit: 2 x graphic rails, 1 x telescopic pole set, 2 x additional sliders for thicker graphics and Carry bag/tube.</p> <p>Accessories: <b>UB181M</b> Literature holder (300g approx) 352mm (h) x 800mm (w) approx. Maximum literature dimensions - 310mm (h) x 250mm (w) x 15mm (d) approx. <b>UB181-R</b> 1 pairs of additional rails for double- sided option</p>

We are continually improving and modifying our product range and reserve the right to vary the specifications without prior notice. All dimensions and weights quoted are approximate and we accept no responsibility for variance. E&OE.

www.w-co.co.uk

# Assembly Instructions

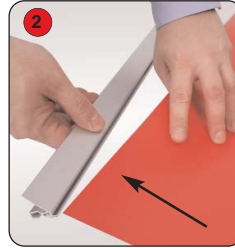
## Banner Stand assembly



Kit includes: 2 x graphic rails, 1 x telescopic pole set, 2 x additional sliders for thicker graphics and Carry bag/tube.



1 Snap open the graphic rails. (If a thicker substrate is required, slide off the current slider and utilise the additional slider)



2 Slide the graphic into the rail.



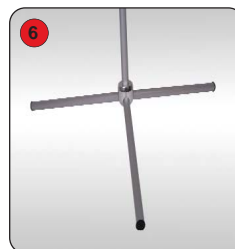
3 When the graphic is aligned, snap the rail shut.



4 Fit the endcaps over the graphic rail.



5 Insert the 3 bungee feet into the base.



6 Assembled base.



7 Extend the telescopic pole by twisting each section, pulling out the pole to the desired height and then twisting to secure fit.



8 Secure the top rail of the graphic over the top attachment on the pole, ensuring the semi-circular indent hooks over and snaps into place.



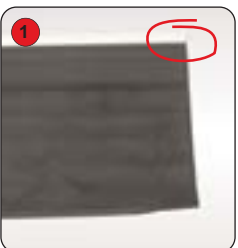
9 Slide the bottom pole collar up to meet the bottom rail of the graphic.



10 Hook the bottom rail on to the bottom pole collar. Tension the graphic by adjusting the position of the collar.

**NB** (For twin banners repeat steps 1 - 4 and 8 - 10.)

## Optional Literature holder assembly



1 Remove the endcap from the literature holder and remove the plastic rod.



2 Create a 20mm approx. hem at the bottom edge of the graphic. Slide the plastic rod through the hem.



3 Insert the graphic into the literature holder rail and replace the endcap.



4 Secure the literature holder rail on to the bottom pole collar. Tension the graphic by adjusting the position of the collar.